

**NOTICE TO BIDDER
CITY OF ONEIDA WATERSHED
SALE OF FOREST PRODUCTS**

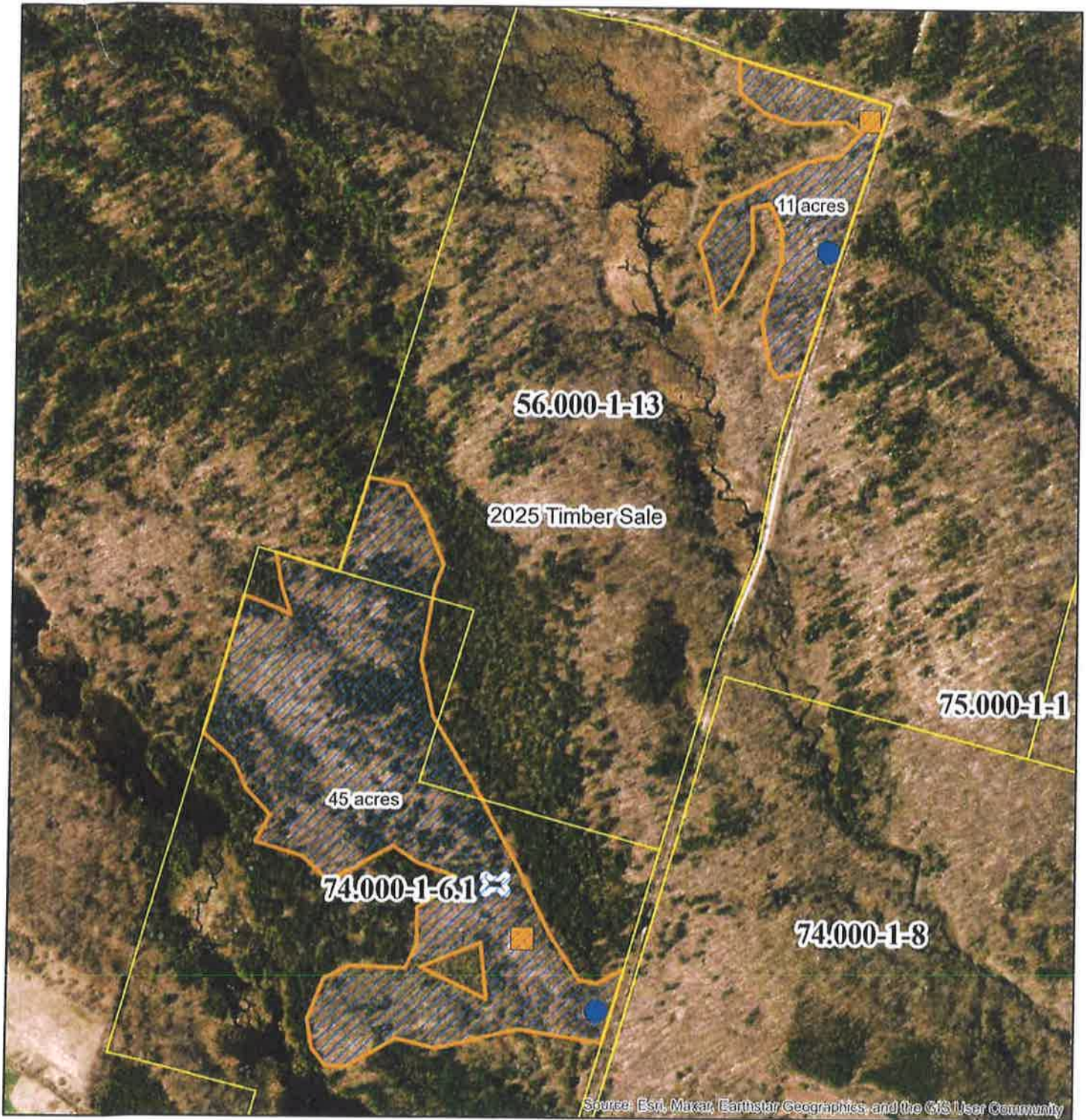
Pursuant to Section 72-A of the General Municipal Law, SEALED BIDS for forest products (138 MBF and 76 cords of standing timber) on land owned by the City of Oneida, will be received by F&W Forestry Services, Inc. at 4685 Middle Settlement Rd., New Hartford, NY 13413 until **2:00 pm Thursday, December 18th, 2025**, at which time they will be opened and read by the City's agent, F&W Forestry Services, Inc. Seller reserves the right to reject any unacceptable offer.

All blue marked trees and American beech within the sale area are for sale. The site can be accessed from Hanifin Rd. in the Town of Florence, Oneida County, N.Y. There will be a timber sale showing on Tuesday, December 2, 2025, at 9 am. We will meet at the intersection of Hanifin Rd and Shultz Rd. Any questions about the sale, please call Lukas Myers, F&W Forestry Services, Inc. at (315) 378-3102.

Oneida City Watershed 2026 Timber Sale Map

Town of Florence, Oneida County, New York

Tax Parcel ID#s: 56-1-13 & 74-1-6.1



Legend

- Oneida City parcels
- 2026 marked timber
- Corduroy or mats needed

- Landing area
- Drainage crossing



Map by: L. Myers, CF
F&W Forestry Services, Inc.
Map date: 10/23/25

1,000

Feet